



POMPE ROTOMEC

KBM 80/4-220.1

DN 80

1450 rpm

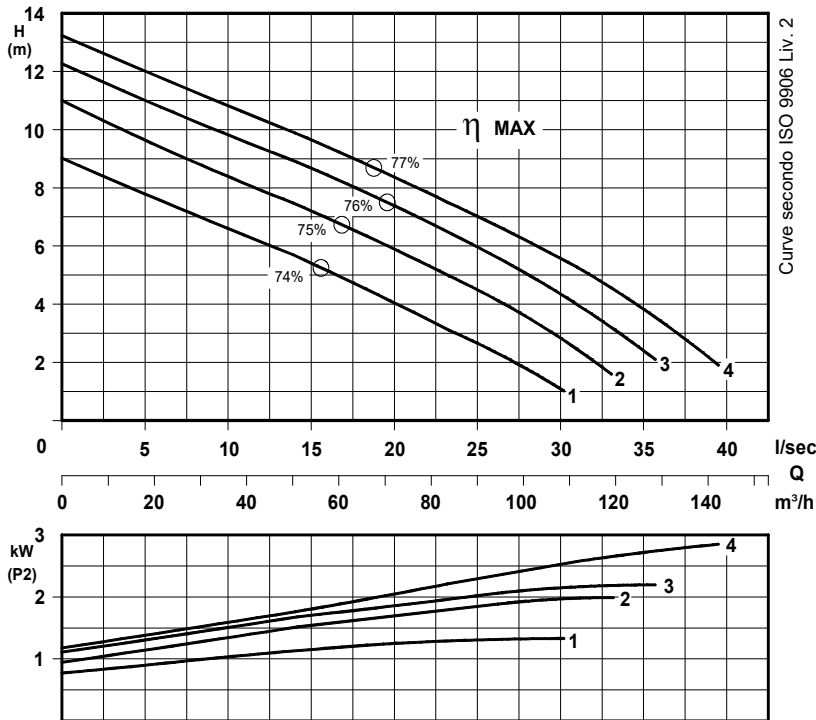
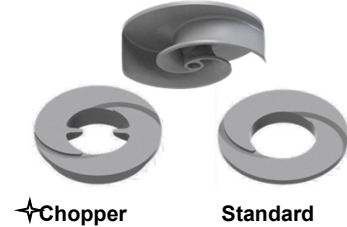
Elettropompe con motore flangiato per liquidi carichi in camera asciutta
Dry installed sewage electric pumps with flanged motor
Electropompes pour eaux chargees en fosse sèche



UNI EN ISO 9001 - 2015

N°	CURVA - Curve - Courbe	POMPA Pump Pompe	DN	GIRI /Min - RPM - Tours/min.	POTENZA MOTORE	PESO
					Motor rating Puissance moteur	Weight Poids
1	KBM 80-165 A1 L1		80	1450	1,5	75
2	KBM 80-180 A2 L2				2,2	83
3	KBM 80-185 A2 L2				3	90
4	KBM 80-190 A2 L2					

Girante bicanale aperta e diffusore autopulente
Two channel open impeller and self-cleaning diffuser
Roue à 2 canaux ouvert et anneau autonettoyant



✦ **Versione chopper con diffusore a taglienti e girante induriti**
Chopper version with cutting diffuser and impeller hardened
Version chopper avec anneau tranchant et roue durci

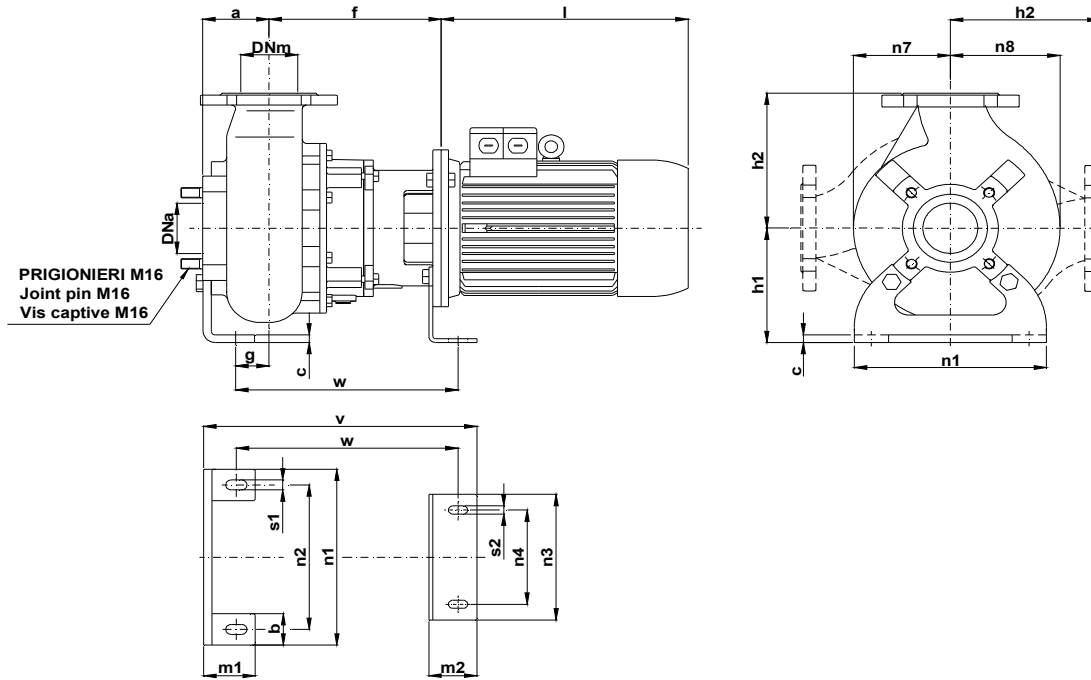
P2 - Potenza resa - Shaft power - Puissance sur arbre

COSTRUZIONE - Materials - Matériaux	
Fusioni principali - Principal parts - Parts principal	Ghisa - Cast iron - Fonte - GG 25
Girante - Impeller - Roue	Ghisa - Cast iron - Fonte - GG 25
Albero - Shaft - Arbre	AISI 420
Viteria - Screws - Vis	AISI 304

TENUTE MECCANICHE - Mechanical seals - Garniture mécanique
Doppia tenuta meccanica in bagno d'olio - Double mechanical seals in oil bath - Double garniture mécanique en chambre d'huile
Tenuta lato motore / tenuta lato liquido : carburo di silicio
Motor side / liquid side mechanical seal : silicon carbide
Garniture mécanique côté du moteur / côté liquide : carbure de silicium

CARATTERISTICHE TECNICHE - Technical Features - Caractéristiques Techniques	
Motore - Motor - Moteur : B5 IP55	Classe isolamento - Insulating class - Isolement classe : F
Max. temperatura liquido - Max liquid temp. - Max Temperature du liquide: 60°C	
pH Liquido pompato - pH pumped liquid - pH du liquide pompé : 6 - 10	

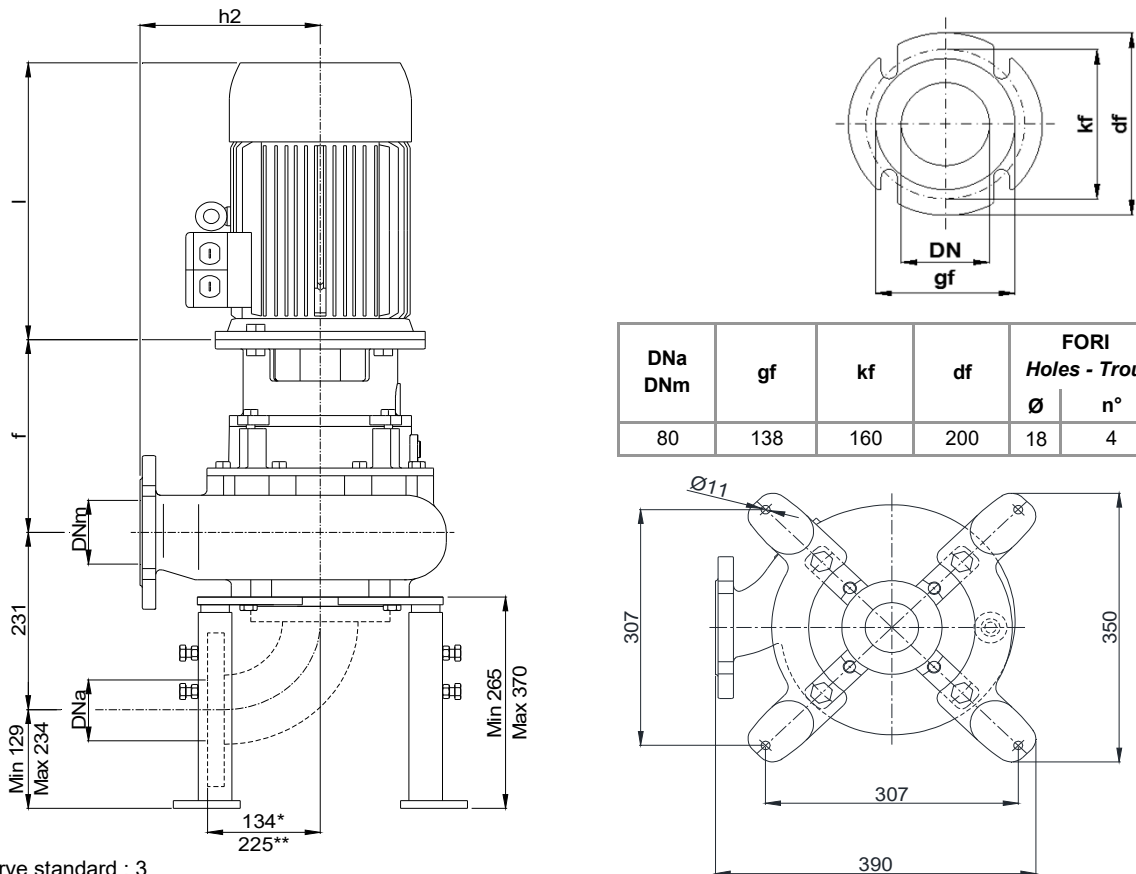
INSTALLAZIONE ORIZZONTALE - *Horizontal installation - Installation Horizontale*



POMPA Pumps Pompe	DNa DNm	Gr. Motore Motor size Taille du moteur	a	b	c	f	g	h1	h2	l	m1	m2	n1	n2	n3	n4	n7	n8	s1	s2	v	w
KBM 80 -	80	90 (kW 1,5 - 2,2)	95	50	12	235	49	180	215	295	75	70	280	230	200	150	140	160	16	13	383	308
		100 (kW 3)				251				325												399

Dimensioni - Size - Dimensions in mm.

INSTALLAZIONE VERTICALE - *Vertical installation - Installation verticale*



DNa DNm	gf	kf	df	FORI Holes - Trou	
				Ø	n°
80	138	160	200	18	4

* Curva dima - Curve standard : 3

** Curva dima - Curve standard: 5

KBM 80/4-220-1-17X.0

Con riserva di variazioni tecniche e costruttive senza preavviso.

With reserve of technical and constructive variations without warning. - Avec réserve de variations techniques et constructives sans préavis.

POMPE ROTOMECH srl - 20063 CERNUSCO SUL NAVIGLIO (MI) - ITALY - Via Ponchielli, 1

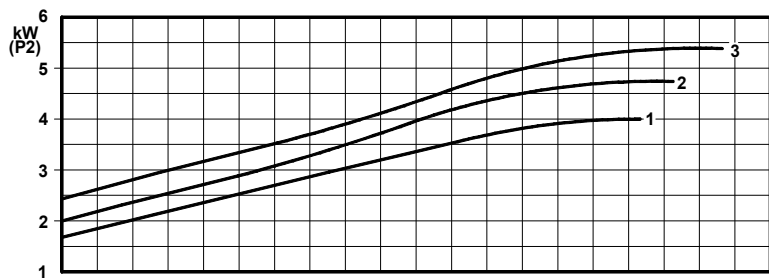
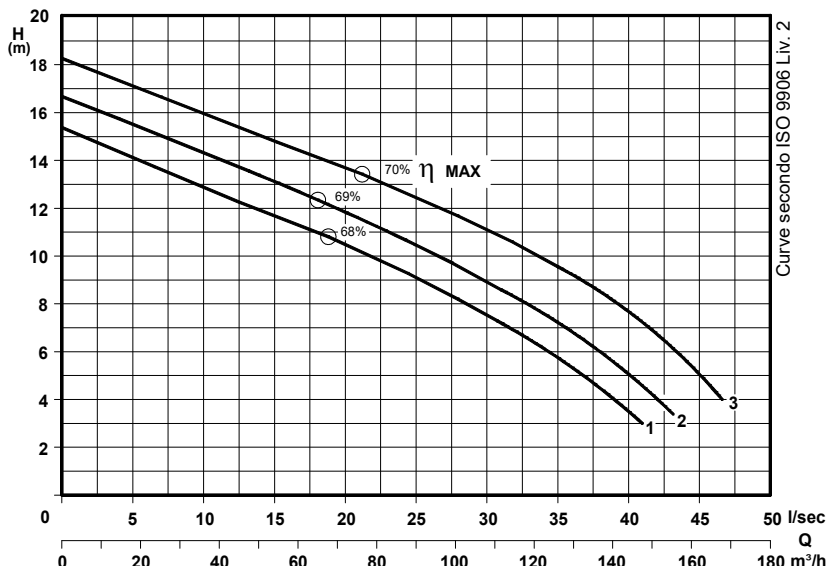
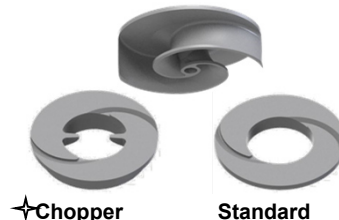
Tel.02 9211.0205 - 02 9233.0399 Fax 02 9211.0630 Sito Internet: www.pomperotomec.it E-mail: sales@pomperotomec.it

Elettropompe con motore flangiato per liquidi carichi in camera asciutta
Dry installed sewage electric pumps with flanged motor
Electropompes pour eaux chargées en fosse sèche



N°	CURVA - Curve - Courbe	POMPA Pump Pompe	DN	GIRI /Min - RPM - Tours/min.	POTENZA MOTORE Motor rating Puissance moteur	PESO Weight Poids
1	KBM 80-205 A2 L2		80	1450	4	110
2	KBM 80-210 A5 L3				5,5	140
3	KBM 80-219 A5 L3					

Girante bicanale aperta e diffusore autopulente
Two channel open impeller and self-cleaning diffuser
Roue à 2 canaux ouvert et anneau autonettoyant



✦ Versione chopper con diffusore a taglienti e girante induriti
 Chopper version with cutting diffuser and impeller hardened
 Version chopper avec anneau tranchant et roue durci

COSTRUZIONE - Materials - Matériaux

Fusioni principali - Principal parts - Parts principal	Ghisa - Cast iron - Fonte - GG 25
Girante - Impeller - Roue	Ghisa - Cast iron - Fonte - GG 25
Albero - Shaft - Arbre	AISI 420
Viteria - Screws - Vis	AISI 304

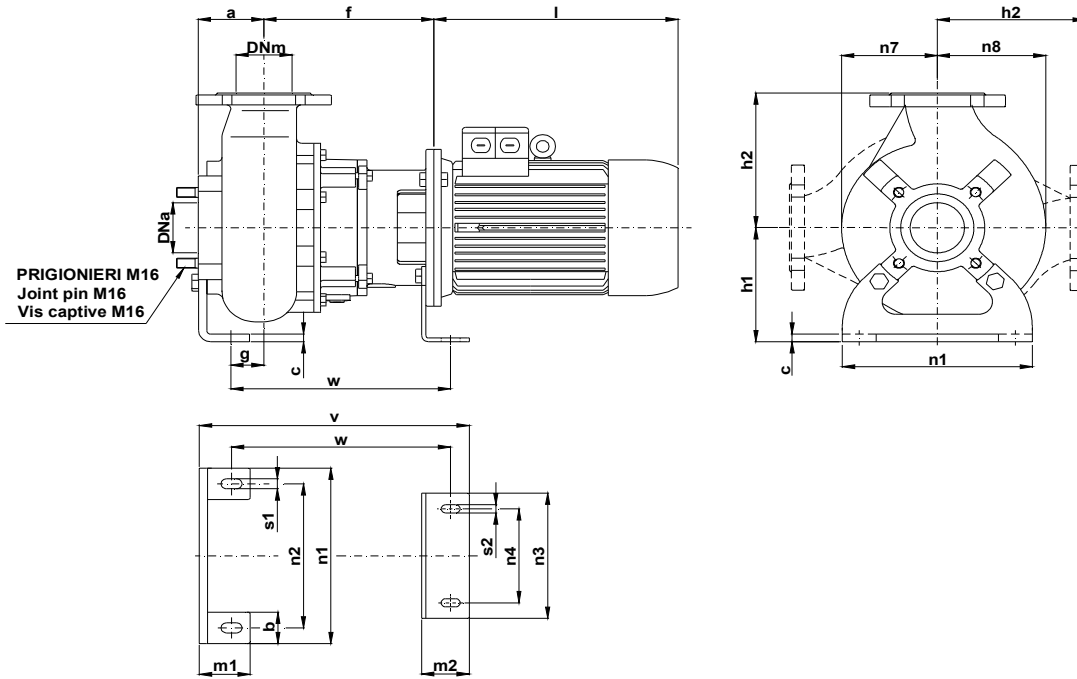
TENUTE MECCANICHE - Mechanical seals - Garniture mécanique

Doppia tenuta meccanica in bagno d'olio - Double mechanical seals in oil bath - Double garniture mécanique en chambre d'huile
 Tenuta lato motore / tenuta lato liquido : carburo di silicio
 Motor side / liquid side mechanical seal : silicon carbide
 Garniture mécanique côté du moteur / côté liquide : carbure de silicium

CARATTERISTICHE TECNICHE - Technical Features - Caractéristiques Techniques

Motore - Motor - Moteur : B5 IP55
 Classe isolamento - Insulating class - Isolement classe : F
 Max. temperatura liquido - Max liquid temp. - Max Temperature du liquide: 60°C
 pH Liquido pompato - pH pumped liquid - pH du liquide pompé : 6 - 10

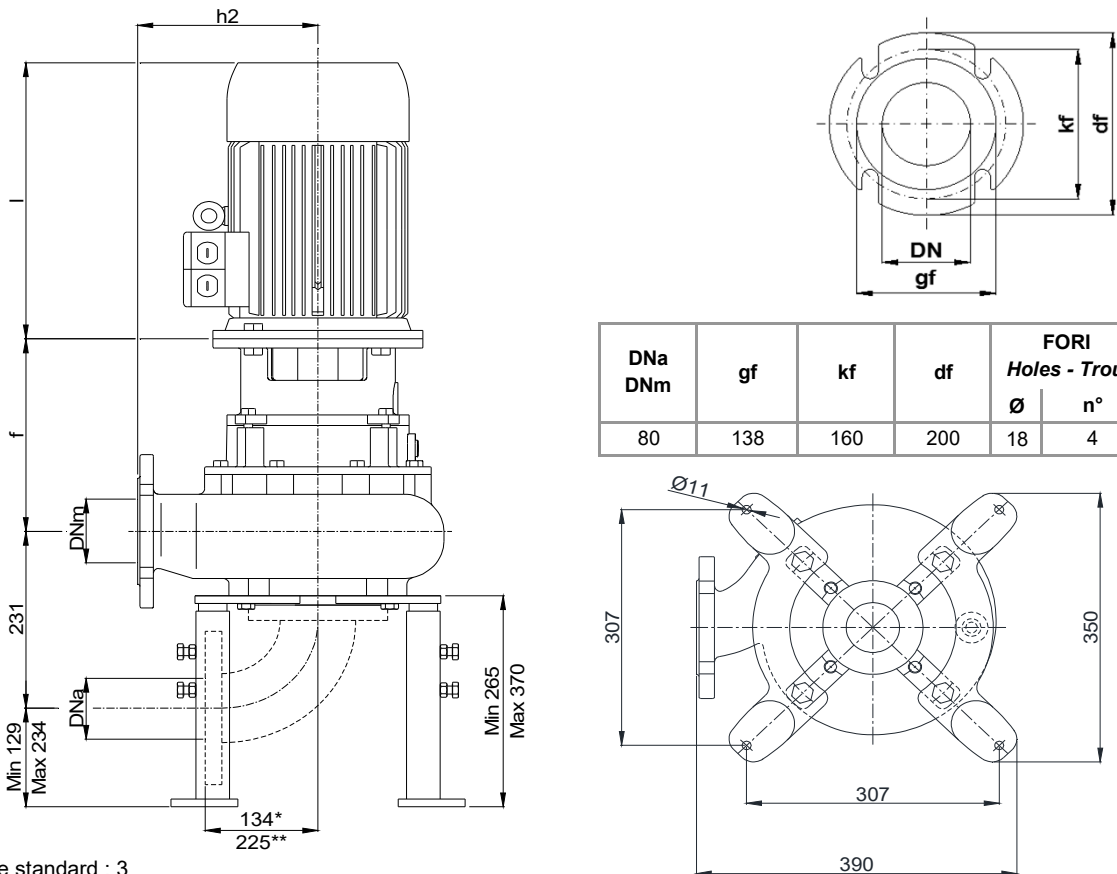
INSTALLAZIONE ORIZZONTALE - *Horizontal installation - Installation Horizontale*



POMPA Pumps Pompe	DNa DNm	Gr. Motore Motor size Taille du moteur	a	b	c	f	g	h1	h2	l	m1	m2	n1	n2	n3	n4	n7	n8	s1	s2	v	w
KBM 80 -..	80	112 (kW 4)	95	50	12	251	49	180	215	345	75	70	280	230	200	150	140	160	16	13	399	324
		435																				

Dimensioni - Size - Dimensions in mm.

INSTALLAZIONE VERTICALE - *Vertical installation - Installation verticale*



DNa DNm	gf	kf	df	FORI Holes - Trou	
				Ø	n°
80	138	160	200	18	4

* Curva dima - Curve standard : 3

** Curva dima - Curve standard: 5

KBM 80/4-220-2-17X.0

Con riserva di variazioni tecniche e costruttive senza preavviso.

With reserve of technical and constructive variations without warning. - Avec réserve de variations techniques et constructives sans préavis.

POMPE ROTOMECH srl - 20063 CERNUSCO SUL NAVIGLIO (MI) - ITALY - Via Ponchielli, 1

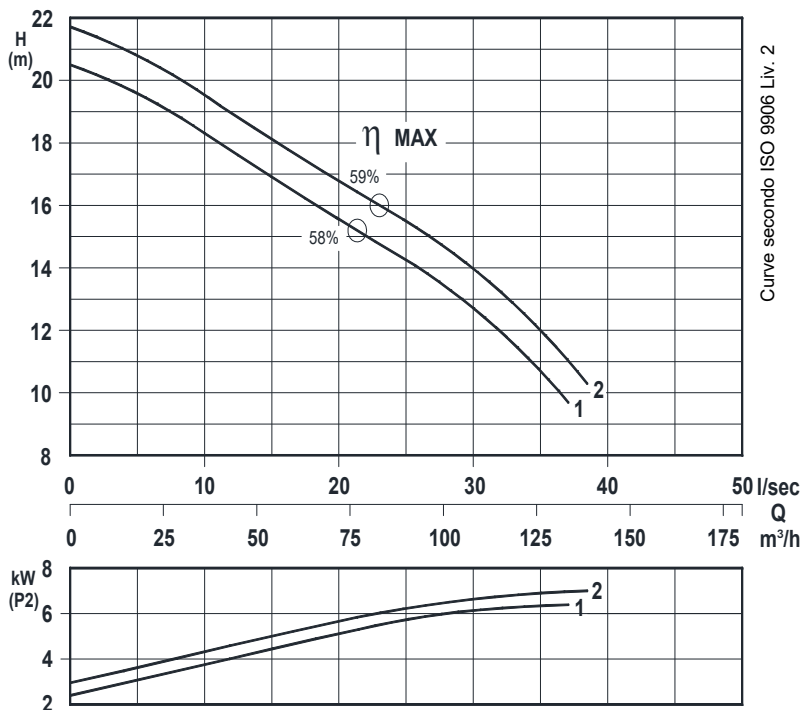
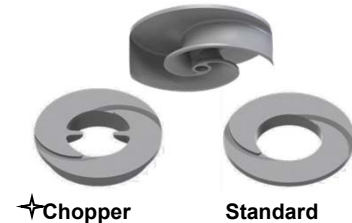
Tel.02 9211.0205 - 02 9233.0399 Fax 02 9211.0630 Sito Internet: www.pomperotomec.it E-mail: sales@pomperotomec.it

Elettropompe con motore flangiato per liquidi carichi in camera asciutta
Dry installed sewage electric pumps with flanged motor
Electropompes pour eaux chargées en fosse sèche



N°	CURVA - Curve - Courbe POMPA Pump Pompe	DN	GIRI /Min - RPM - Tours/min.	POTENZA MOTORE Motor rating Puissance moteur	PESO Weight Poids
1	KBM 80-235 A4 L3	80	1450	7,5	180
2	KBM 80-240 A4 L3				

Girante bicanale aperta e diffusore autopulente
Two channel open impeller and self-cleaning diffuser
Roue à 2 canaux ouvert et anneau autonettoyant



P₂ - Potenza resa - Shaft power - Puissance sur arbre

✦ Versione chopper con diffusore a taglienti e girante induriti
 Chopper version with cutting diffuser and impeller hardened
 Version chopper avec anneau tranchant et roue durci

COSTRUZIONE - Materials - Matériaux

Fusioni principali - Principal parts - Parts principal	Ghisa - Cast iron - Fonte - GG 25
Girante - Impeller - Roue	Ghisa - Cast iron - Fonte - GS 500
Albero - Shaft - Arbre	AISI 420
Viteria - Screws - Vis	AISI 304

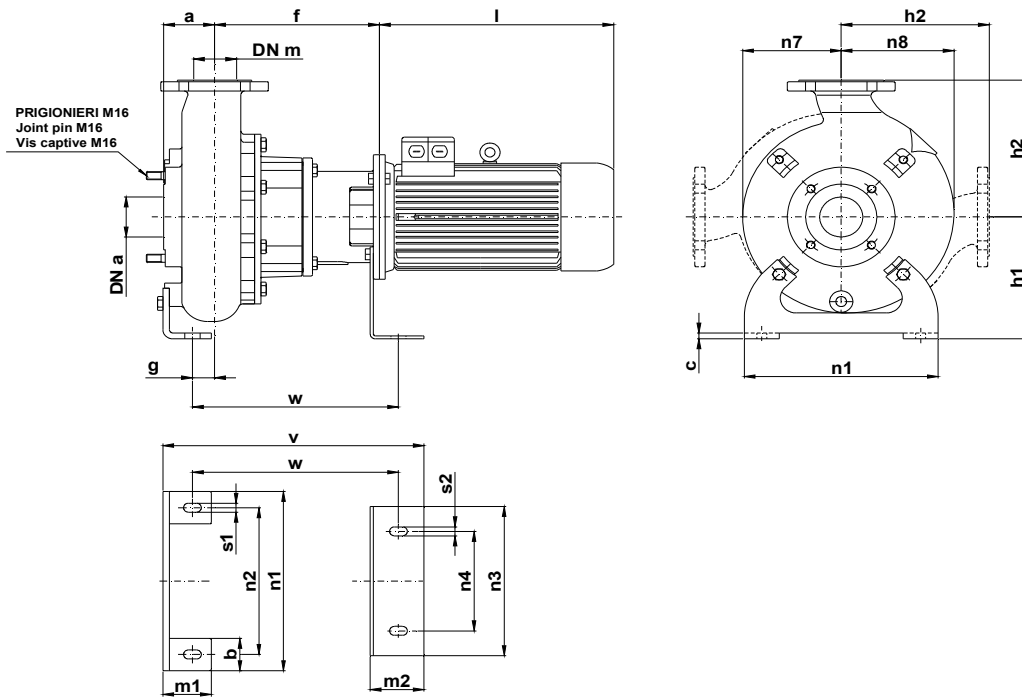
TENUTE MECCANICHE - Mechanical seals - Garniture mécanique

Doppia tenuta meccanica in bagno d'olio - Double mechanical seals in oil bath - Double garniture mécanique en chambre d'huile
 Tenuta lato motore / tenuta lato liquido : carburo di silicio
 Motor side / liquid side mechanical seal : silicon carbide
 Garniture mécanique côté du moteur / côté liquide : carbure de silicium

CARATTERISTICHE TECNICHE - Technical Features - Caractéristiques Techniques

Motore - Motor - Moteur : B5 IP55 Classe isolamento - Insulating class - Isolement classe : F
 Max. temperatura liquido - Max liquid temp. - Max Temperature du liquide: 60°C
 pH Liquido pompato - pH pumped liquid - pH du liquide pompé: 6 - 10

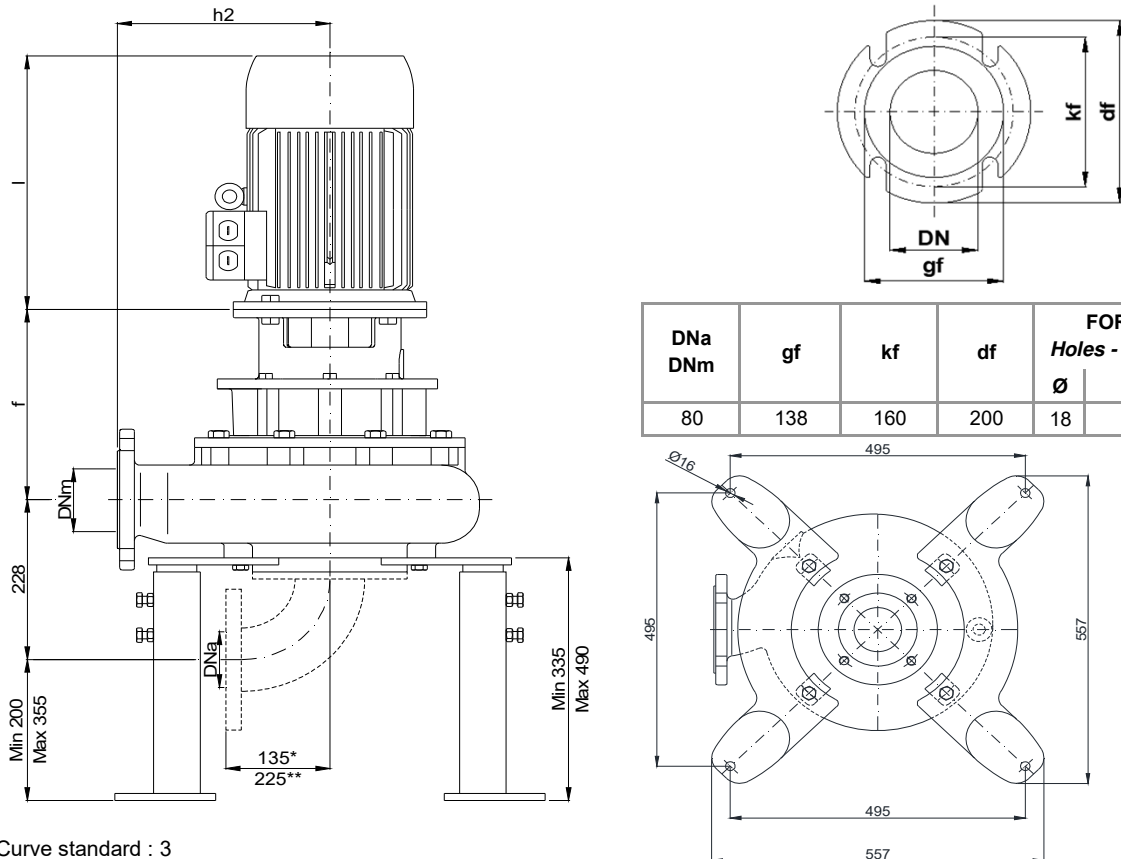
INSTALLAZIONE ORIZZONTALE - *Horizontal installation - Installation Horizontale*



POMPA Pumps Pompe	DNa DNm	Gr. Motore Motor size Taille du moteur	a	b	c	f	g	h1	h2	l	m1	m2	n1	n2	n3	n4	n7	n8	s1	s2	v	w
KBM 80 - ..	80	132	95	70	12	305	29	245	275	435	100	100	400	330	300	200	185	210	18	18	483	371

Dimensioni - Size - Dimensions in mm.

INSTALLAZIONE VERTICALE - *Vertical installation - Installation verticale*



DNa DNm	gf	kf	df	FORI Holes - Trou	
				Ø	n°
80	138	160	200	18	4

* Curva dima - Curve standard : 3

** Curva dima - Curve standard: 5

KBM 80/4-280-1-17X.0

Con riserva di variazioni tecniche e costruttive senza preavviso.

With reserve of technical and constructive variations without warning. - Avec réserve de variations techniques et constructives sans préavis.

POMPE ROTOMECH srl - 20063 CERNUSCO SUL NAVIGLIO (MI) - ITALY - Via Ponchielli, 1

Tel.02 9211.0205 - 02 9233.0399 Fax 02 9211.0630 Sito Internet: www.pomperotomec.it E-mail: sales@pomperotomec.it

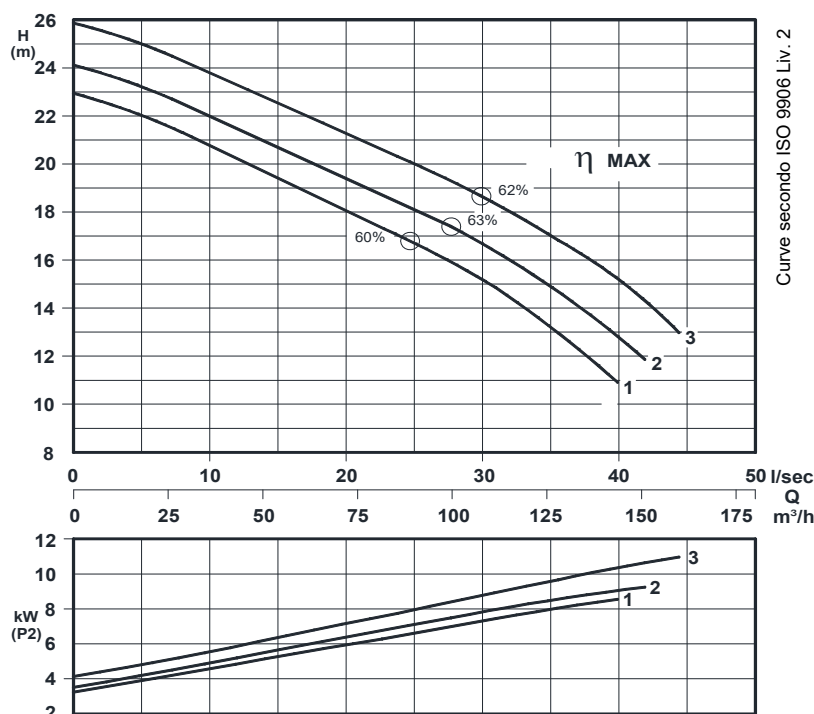
Elettropompe con motore flangiato per liquidi carichi in camera asciutta
Dry installed sewage electric pumps with flanged motor
Electropompes pour eaux chargées en fosse sèche



UNI EN ISO 9001 - 2015

N°	CURVA - Curve - Courbe POMPA Pump Pompe	DN	GIRI /Min - RPM - Tours/min.	POTENZA MOTORE Motor rating Puissance moteur	PESO Weight Poids
1	KBM 80-245 A6 L4	80	1450	11	190
2	KBM 80-250 A6 L4				
3	KBM 80-260 A6 L4				

Girante bicanale aperta e diffusore autopulente
Two channel open impeller and self-cleaning diffuser
Roue à 2 canaux ouvert et anneau autonettoyant



P₂ - Potenza resa - Shaft power - Puissance sur arbre

✦ Versione chopper con diffusore a taglienti e girante induriti
Chopper version with cutting diffuser and impeller hardened
Version chopper avec anneau tranchant et roue durci

COSTRUZIONE - Materials - Matériaux

Fusioni principali - Principal parts - Parts principal	Ghisa - Cast iron - Fonte - GG 25
Girante - Impeller - Roue	Ghisa - Cast iron - Fonte - GS 500
Albero - Shaft - Arbre	AISI 420
Viteria - Screws - Vis	AISI 304

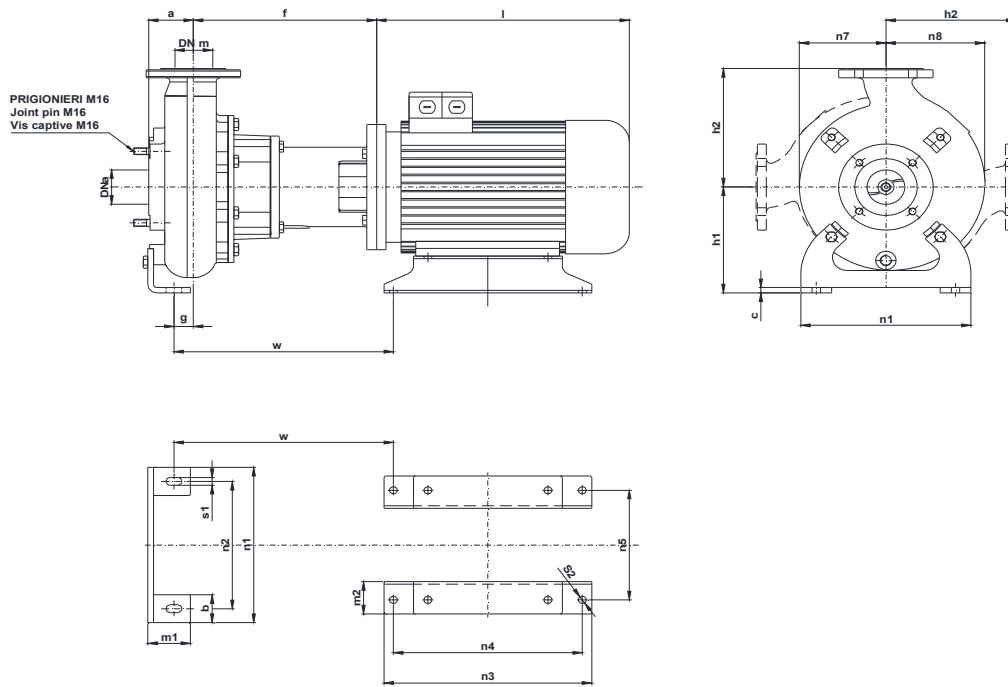
TENUTE MECCANICHE - Mechanical seals - Garniture mécanique

Doppia tenuta meccanica in bagno d'olio - Double mechanical seals in oil bath - Double garniture mécanique en chambre d'huile
 Tenuta lato motore / tenuta lato liquido : carburo di silicio
Motor side / liquid side mechanical seal : silicon carbide
Garniture mécanique côté du moteur / côté liquide : carbure de silicium

CARATTERISTICHE TECNICHE - Technical Features - Caractéristiques Techniques

Motore - Motor - Moteur : B5 IP55
 Classe isolamento - Insulating class - Isolement classe : F
 Max. temperatura liquido - Max liquid temp. - Max Temperature du liquide: 60°C
 pH Liquido pompato - pH pumped liquid - pH du liquide pompé: 6 - 10

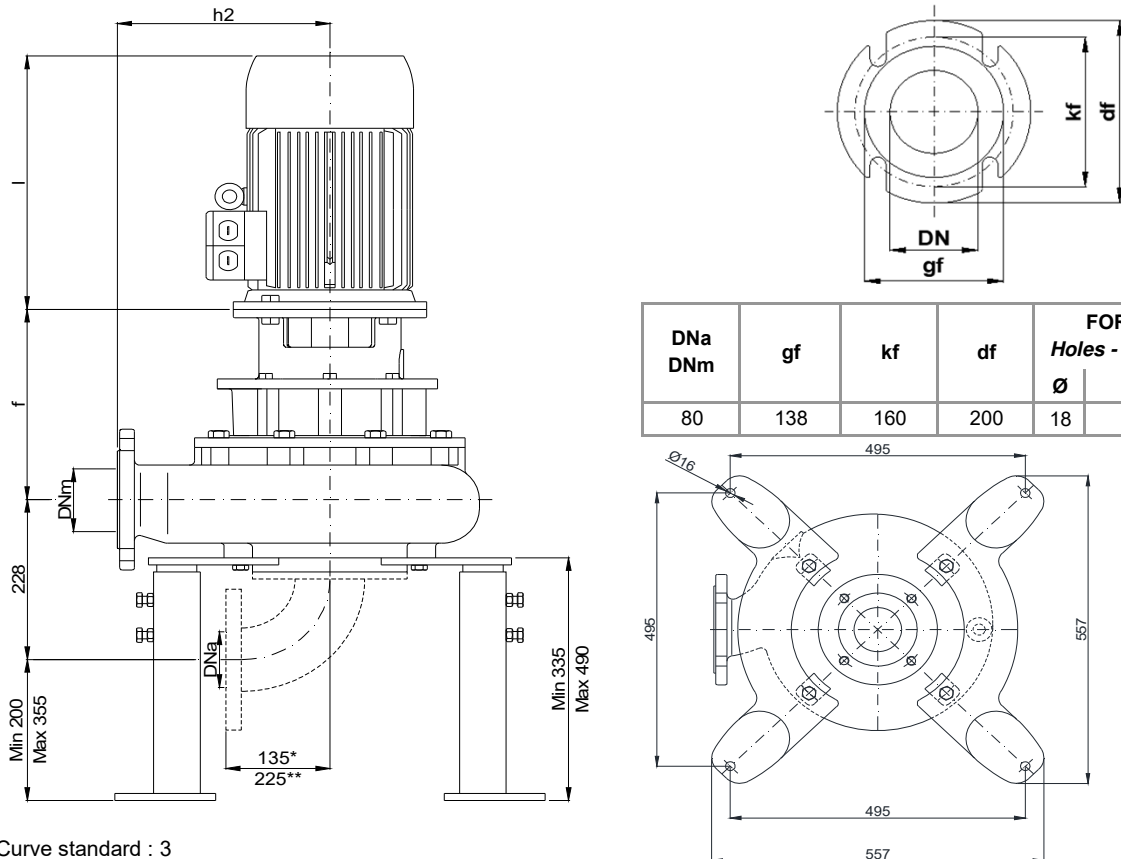
INSTALLAZIONE ORIZZONTALE - *Horizontal installation - Installation Horizontale*



POMPA Pumps Pompe	DNa DNm	Gr. Motore Motor size Taille du moteur	a	b	c	f	g	h1	h2	i	m1	m2	n1	n2	n3	n4	n5	n7	n8	s1	s2	w
KBM 80 - ..	80	160 M	95	70	12	388	29	245	275	545	100	100	400	330	440	210	254	185	210	18	16,5	452

Dimensioni - Size - Dimensions in mm.

INSTALLAZIONE VERTICALE - *Vertical installation - Installation verticale*



DNa DNm	gf	kf	df	FORI Holes - Trou	
				Ø	n°
80	138	160	200	18	4

* Curva dima - Curve standard : 3

** Curva dima - Curve standard: 5

KBM 80/4-280-2-17X.0

Con riserva di variazioni tecniche e costruttive senza preavviso.

With reserve of technical and constructive variations without warning. - Avec réserve de variations techniques et constructives sans préavis.

POMPE ROTOMECH srl - 20063 CERNUSCO SUL NAVIGLIO (MI) - ITALY - Via Ponchielli, 1

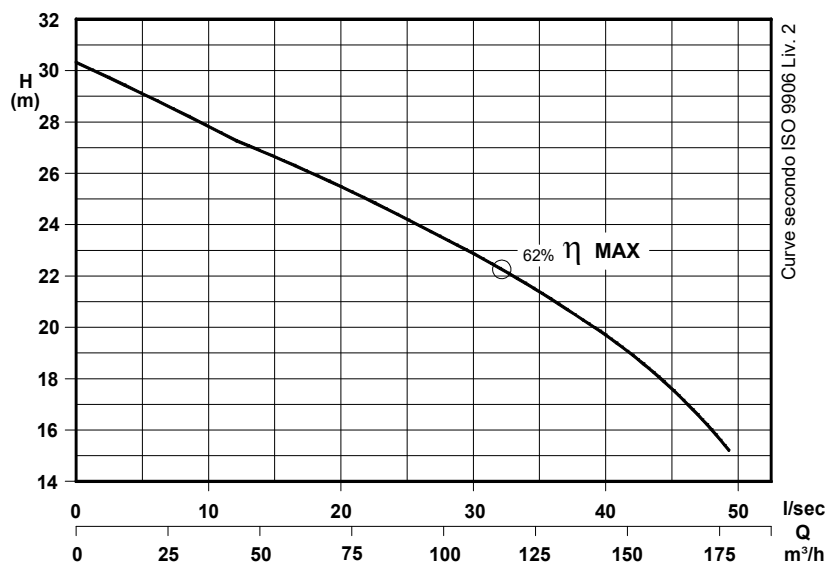
Tel.02 9211.0205 - 02 9233.0399 Fax 02 9211.0630 Sito Internet: www.pomperotomec.it E-mail: sales@pomperotomec.it

Elettropompe con motore flangiato per liquidi carichi in camera asciutta
Dry installed sewage electric pumps with flanged motor
Electropompes pour eaux chargées en fosse sèche



CURVA - Curve - Courbe		POMPA Pump Pompe	DN	GIRI /Min - RPM - Tours/min.	POTENZA MOTORE Motor rating Puissance moteur	PESO Weight Poids
N°					kW	Kg
1	KBM 80-279 A6 L4		80	1450	15	270

Girante bicanale aperta e diffusore autopulente
Two channel open impeller and self-cleaning diffuser
Roue à 2 canaux ouvert et anneau autonettoyant



P₂ - Potenza resa - Shaft power - Puissance sur arbre

★ Versione chopper con diffusore a taglienti e girante induriti
 Chopper version with cutting diffuser and impeller hardened
 Version chopper avec anneau tranchant et roue durci

COSTRUZIONE - Materials - Matériaux

Fusioni principali - Principal parts - Parts principal	Ghisa - Cast iron - Fonte - GG 25
Girante - Impeller - Roue	Ghisa - Cast iron - Fonte - GS 500
Albero - Shaft - Arbre	AISI 420
Viteria - Screws - Vis	AISI 304

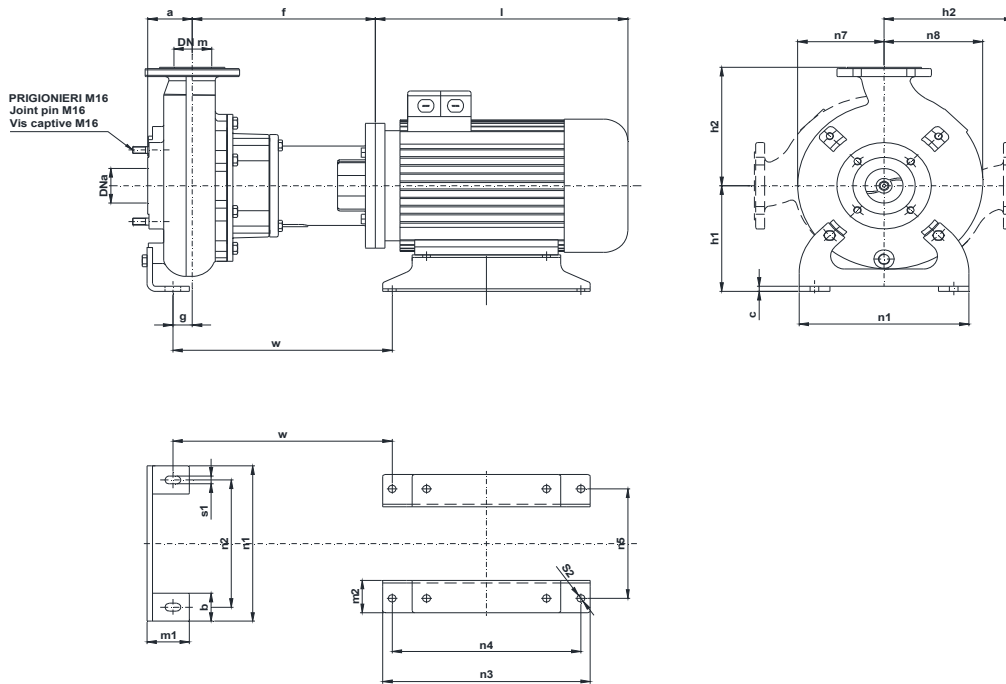
TENUTE MECCANICHE - Mechanical seals - Garniture mécanique

Doppia tenuta meccanica in bagno d'olio - Double mechanical seals in oil bath - Double garniture mécanique en chambre d'huile
 Tenuta lato motore / tenuta lato liquido : carburo di silicio
 Motor side / liquid side mechanical seal : silicon carbide
 Garniture mécanique côté du moteur / côté liquide : carbure de silicium

CARATTERISTICHE TECNICHE - Technical Features - Caractéristiques Techniques

Motore - Motor - Moteur : B5 IP55 Classe isolamento - Insulating class - Isolement classe : F
 Max. temperatura liquido - Max liquid temp. - Max Temperature du liquide: 60°C
 pH Liquido pompato - pH pumped liquid - pH du liquide pompé: 6 - 10

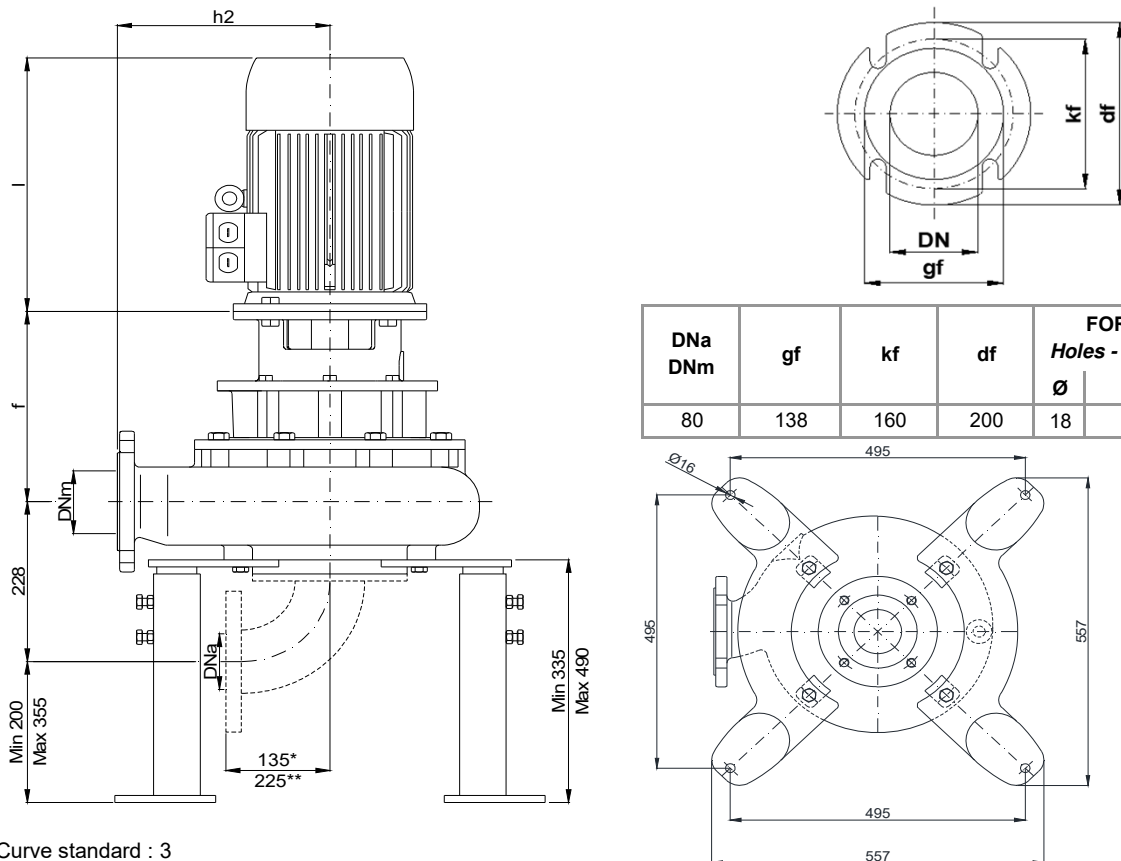
INSTALLAZIONE ORIZZONTALE - *Horizontal installation - Installation Horizontale*



POMPA Pumps Pompe	DNa DNm	Gr. Motore Motor size Taille du moteur	a	b	c	f	g	h1	h2	i	m1	m2	n1	n2	n3	n4	n5	n7	n8	s1	s2	w
KBM 80 - ..	80	160 L	95	70	12	388	29	245	275	570	100	100	400	330	440	254	254	185	210	18	16,5	452

Dimensioni - Size - Dimensions in mm.

INSTALLAZIONE VERTICALE - *Vertical installation - Installation verticale*



DNa DNm	gf	kf	df	FORI Holes - Trou	
				Ø	n°
80	138	160	200	18	4

* Curva dima - Curve standard : 3

** Curva dima - Curve standard: 5

KBM 80/4-280-3-17X.0

Con riserva di variazioni tecniche e costruttive senza preavviso.

With reserve of technical and constructive variations without warning. - Avec réserve de variations techniques et constructives sans préavis.

POMPE ROTOMECH srl - 20063 CERNUSCO SUL NAVIGLIO (MI) - ITALY - Via Ponchielli, 1

Tel.02 9211.0205 - 02 9233.0399 Fax 02 9211.0630 Sito Internet: www.pomperotomec.it E-mail: sales@pomperotomec.it



POMPE ROTOMECC

KBM 80/2-220.1

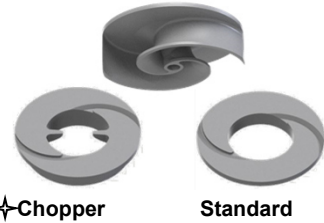
DN 80

2900 rpm

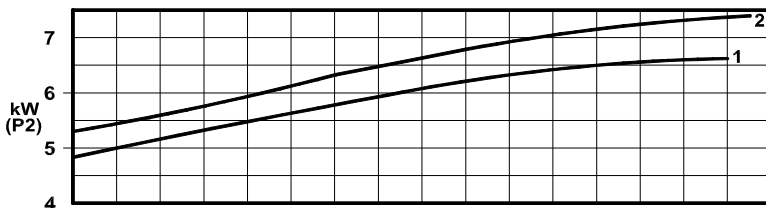
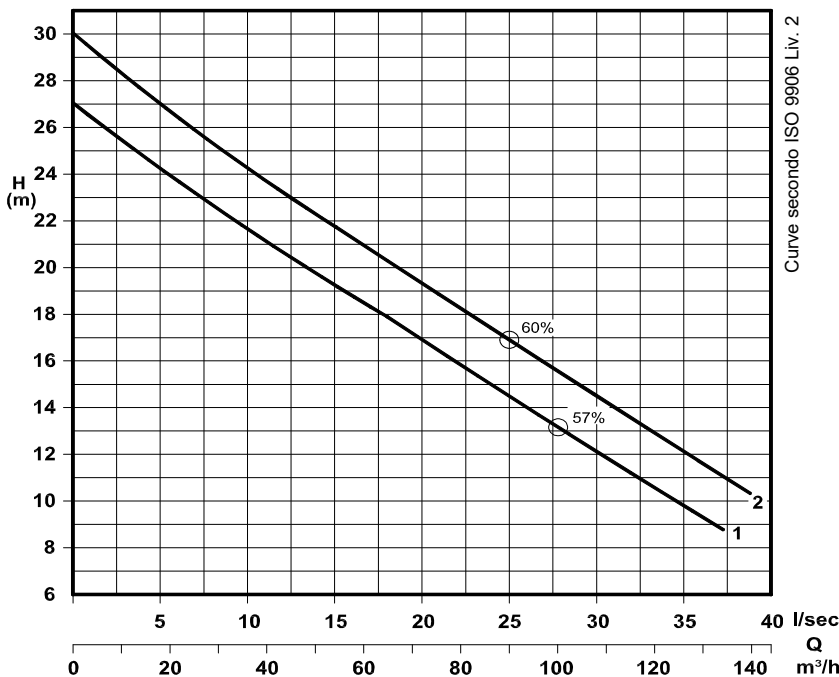
Elettropompe con motore flangiato per liquidi carichi in camera asciutta
Dry installed sewage electric pumps with flanged motor
Electropompes pour eaux chargées en fosse sèche



Girante bicanale aperta e diffusore autopulente
Two channel open impeller and self-cleaning diffuser
Roue à 2 canaux ouvert et anneau autonettoyant



CURVA - Curve - Courbe		DN	GIRI /Min - RpM - Tours/min.	POTENZA MOTORE Motor rating Puissance moteur	PESO Weight Poids
POMPA Pump Pompe					
N°				kW	Kg
1	KBM 80/2-150 A5 L3	80	2900	7,5	153
2	KBM 80/2-158 A5 L3				



P2 - Potenza resa - Shaft power - Puissance sur arbre

✦ **Versione chopper con diffusore a taglienti e girante induriti**
Chopper version with cutting diffuser and impeller hardened
Version chopper avec anneau tranchant et roue durci

COSTRUZIONE - Materials - Matériaux

Fusioni principali - <i>Principal parts - Parts principal</i>	Ghisa - <i>Cast iron - Fonte - GG 25</i>
Girante - <i>Impeller - Roue</i>	Ghisa - <i>Cast iron - Fonte - GS 500</i>
Albero - <i>Shaft - Arbre</i>	AISI 420
Viteria - <i>Screws - Vis</i>	AISI 304

TENUTE MECCANICHE - Mechanical seals - Garniture mécanique

Doppia tenuta meccanica in bagno d'olio - *Double mechanical seals in oil bath - Double garniture mécanique en chambre d'huile*

Tenuta lato motore / tenuta lato liquido : carburo di silicio

Motor side / liquid side mechanical seal : silicon carbide

Garniture mécanique côté du moteur / côté liquide : carbure de silicium

CARATTERISTICHE TECNICHE - Technical Features - Caractéristiques Techniques

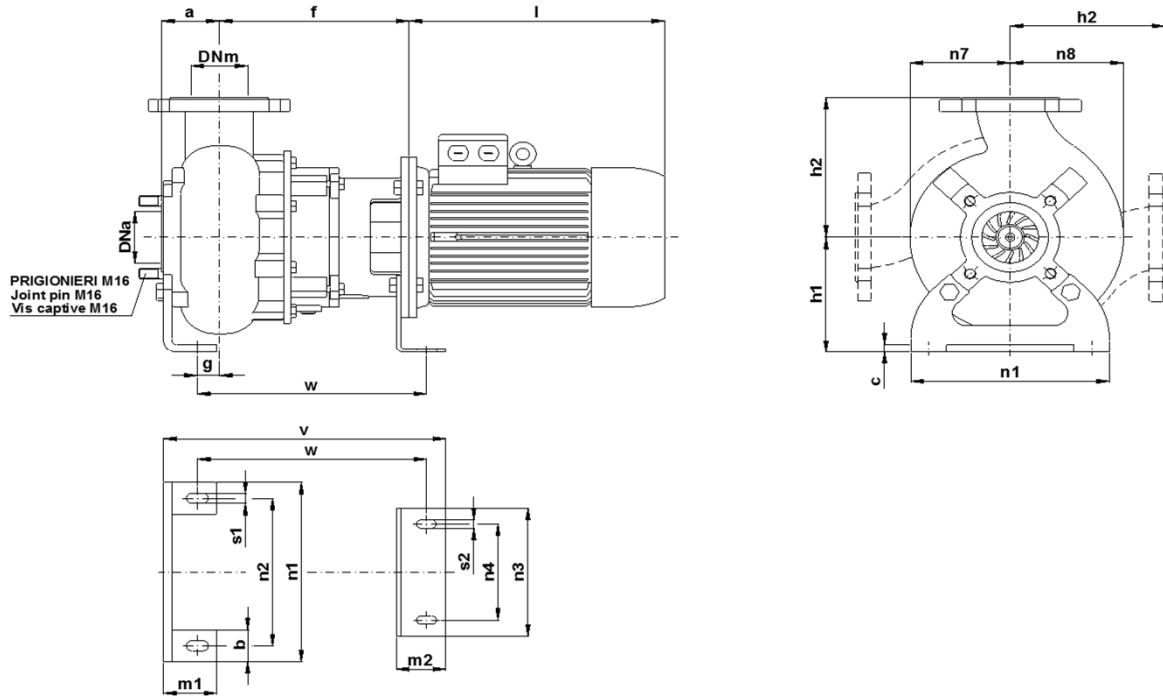
Motore - *Motor - Moteur* : B5 IP55

Classe isolamento - *Insulating class - Isolement classe* : F

Max. temperatura liquido - *Max. liquid temp. - Max. temperature du liquide* : 60°C

pH Liquido pompato - *pH pumped liquid - pH du liquide pompé* : 6 - 10

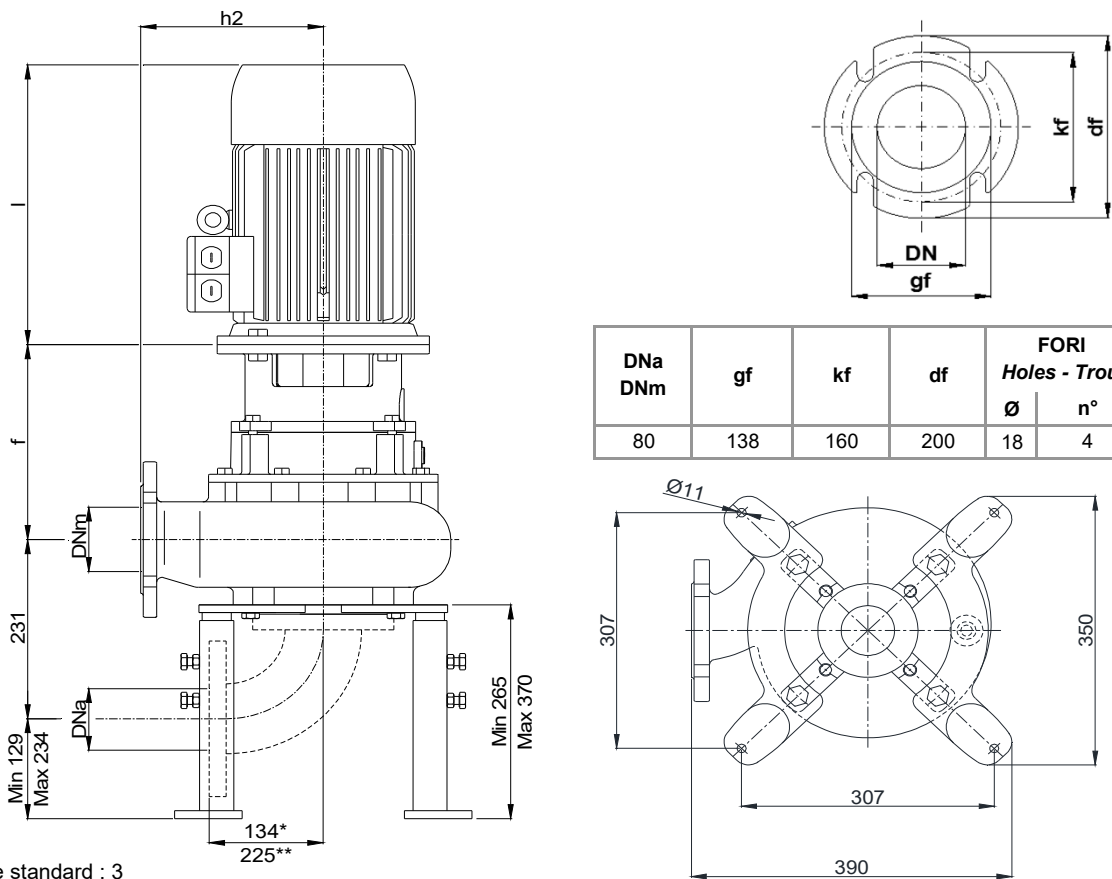
INSTALLAZIONE ORIZZONTALE - Horizontal installation - Installation Horizontale



POMPA Pumps Pompe	DNa DNm	Gr. Motore Motor size Taille du moteur	a	b	c	f	g	h1	h2	l	m1	m2	n1	n2	n3	n4	n7	n8	s1	s2	v	w
KBM 80 -	80	132	95	50	12	305	49	180	215	435	75	100	280	230	280	180	140	160	16	18	483	391

Dimensioni - Size - Dimensions in mm.

INSTALLAZIONE VERTICALE - Vertical installation - Installation verticale



DNa DNm	gf	kf	df	FORI Holes - Trou	
				Ø	n°
80	138	160	200	18	4

* Curva dima - Curve standard : 3

** Curva dima - Curve standard: 5

KBM 80/2-220-1-17X.0

Con riserva di variazioni tecniche e costruttive senza preavviso.

With reserve of technical and constructive variations without warning. - Avec réserve de variations techniques et constructives sans préavis.

POMPE ROTOMECH srl - 20063 CERNUSCO SUL NAVIGLIO (MI) - ITALY - Via Ponchielli, 1

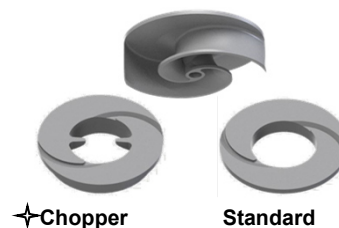
Tel.02 9211.0205 - 02 9233.0399 Fax 02 9211.0630 Sito Internet: www.pomperotomec.it E-mail: sales@pomperotomec.it

Elettropompe con motore flangiato per liquidi carichi in camera asciutta
Dry installed sewage electric pumps with flanged motor
Electropompes pour eaux chargées en fosse sèche



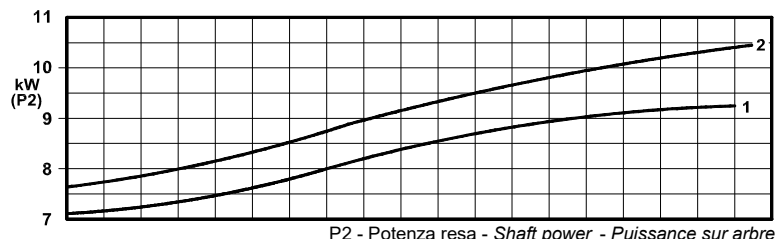
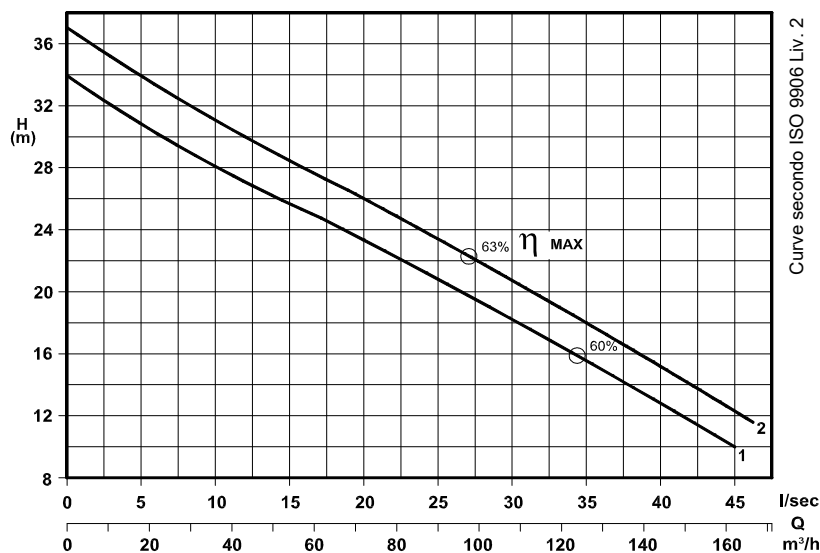
CURVA - Curve - Courbe		DN		POTENZA MOTORE Motor rating Puissance moteur		PESO Weight Poids	
N°	POMPA Pump Pompe			kW		Kg	
1	KBM 80/2-164 A5 L3	80	2900	11			173
2	KBM 80/2-170 A5 L3						

Girante bicanale aperta e diffusore autopulente
Two channel open impeller and self-cleaning diffuser
Roue à 2 canaux ouvert et anneau autonettoyant



✦ Chopper

Standard



✦ Versione chopper con diffusore a taglienti e girante induriti
 Chopper version with cutting diffuser and impeller hardened
 Version chopper avec anneau tranchant et roue durci

COSTRUZIONE - Materials - Matériaux

Fusioni principali - Principal parts - Parts principal	Ghisa - Cast iron - Fonte - GG 25
Girante - Impeller - Roue	Ghisa - Cast iron - Fonte - GS 500
Albero - Shaft - Arbre	AISI 420
Viteria - Screws - Vis	AISI 304

TENUTE MECCANICHE - Mechanical seals - Garniture mécanique

Doppia tenuta meccanica in bagno d'olio - Double mechanical seals in oil bath - Double garniture mécanique en chambre d'huile

Tenuta lato motore / tenuta lato liquido : carburo di silicio

Motor side / liquid side mechanical seal : silicon carbide

Garniture mécanique côté du moteur / côté liquide : carbure de silicium

CARATTERISTICHE TECNICHE - Technical Features - Caractéristiques Techniques

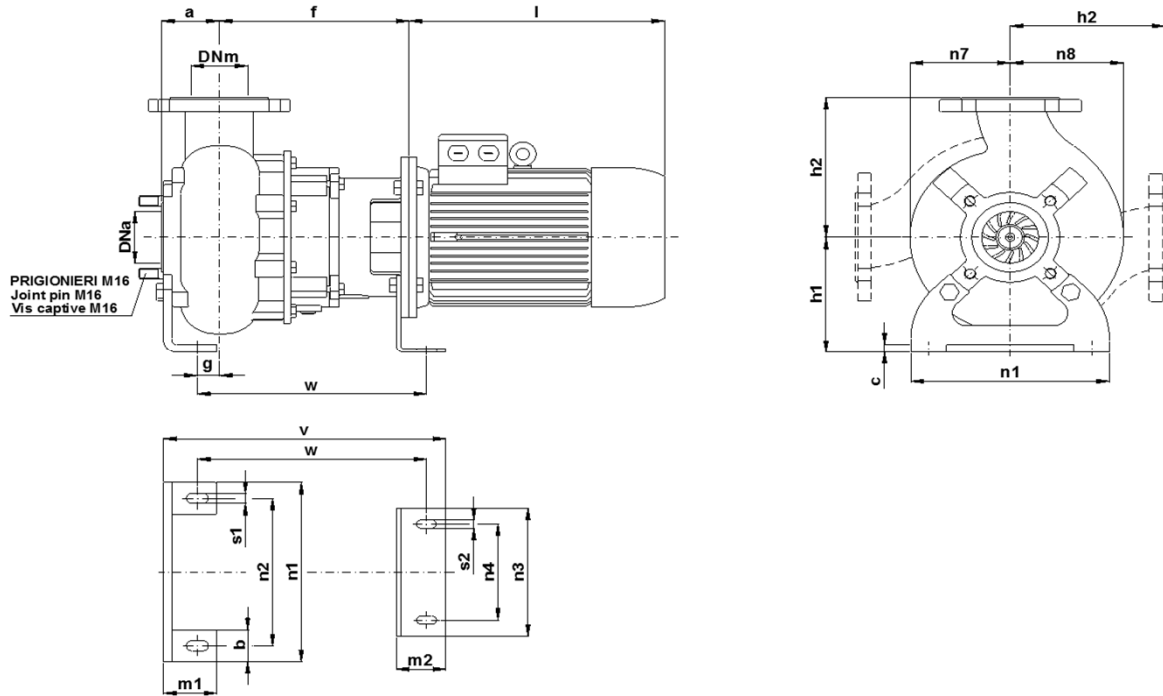
Motore - Motor - Moteur : B5 IP55

Classe isolamento - Insulating class - Isolement classe : F

Max. temperatura liquido - Max liquid temp. - Max Temperature du liquide: 60°C

pH Liquido pompato - pH pumped liquid - pH du liquide pompé: 6 - 10

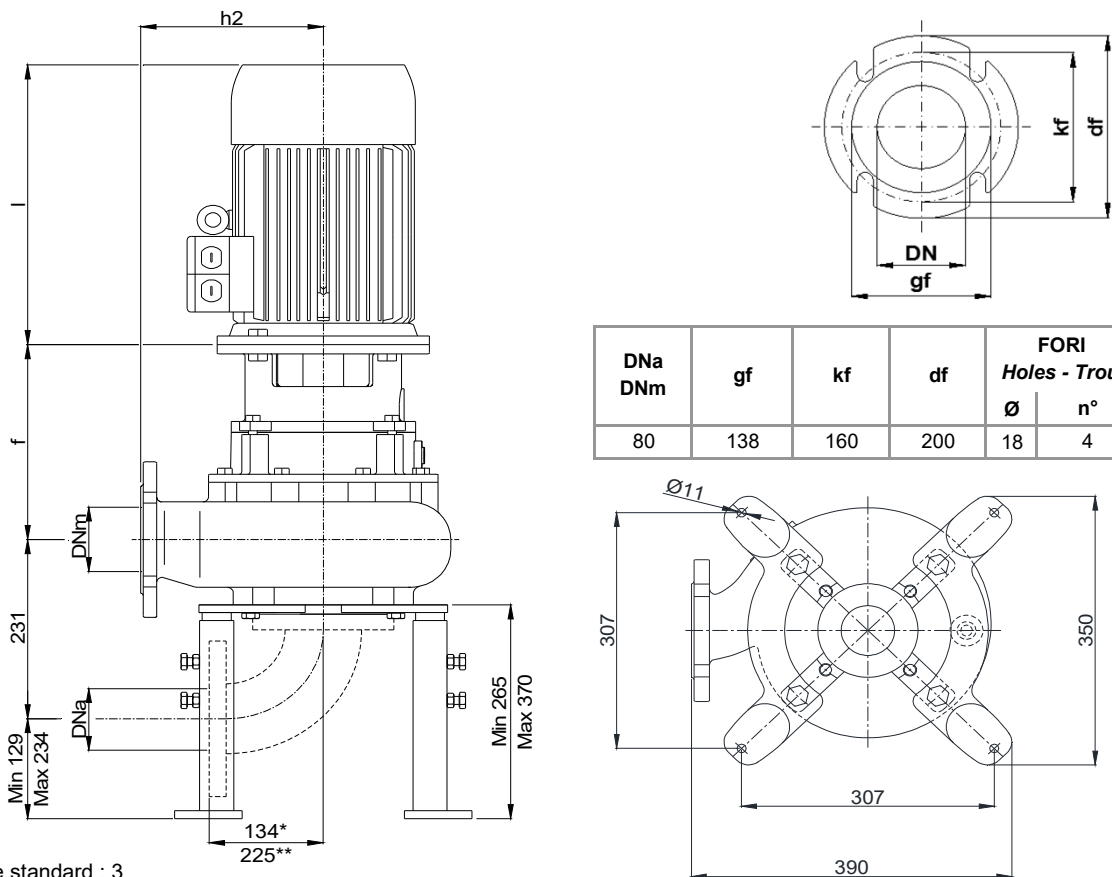
INSTALLAZIONE ORIZZONTALE - Horizontal installation - Installation Horizontale



POMPA Pumps Pompe	DNa DNm	Gr. Motore Motor size Taille du moteur	a	b	c	f	g	h1	h2	l	m1	m2	n1	n2	n3	n4	n7	n8	s1	s2	v	w
KBM 80 -	80	132	95	50	12	305	49	180	215	435	75	100	280	230	280	180	140	160	16	18	483	391

Dimensioni - Size - Dimensions in mm.

INSTALLAZIONE VERTICALE - Vertical installation - Installation verticale



DNa DNm	gf	kf	df	FORI Holes - Trou	
				Ø	n°
80	138	160	200	18	4

* Curva dima - Curve standard : 3

** Curva dima - Curve standard: 5

KBM 80/2-220-2-17X.0

Con riserva di variazioni tecniche e costruttive senza preavviso.

With reserve of technical and constructive variations without warning. - Avec réserve de variations techniques et constructives sans préavis.

POMPE ROTOMECH srl - 20063 CERNUSCO SUL NAVIGLIO (MI) - ITALY - Via Ponchielli, 1

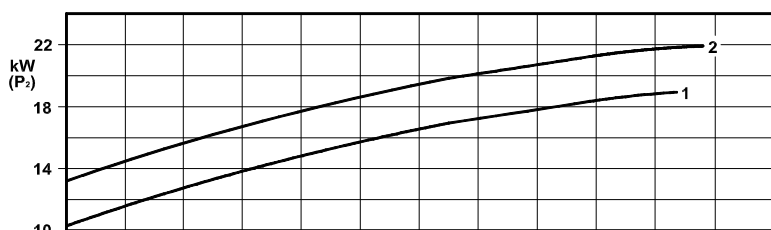
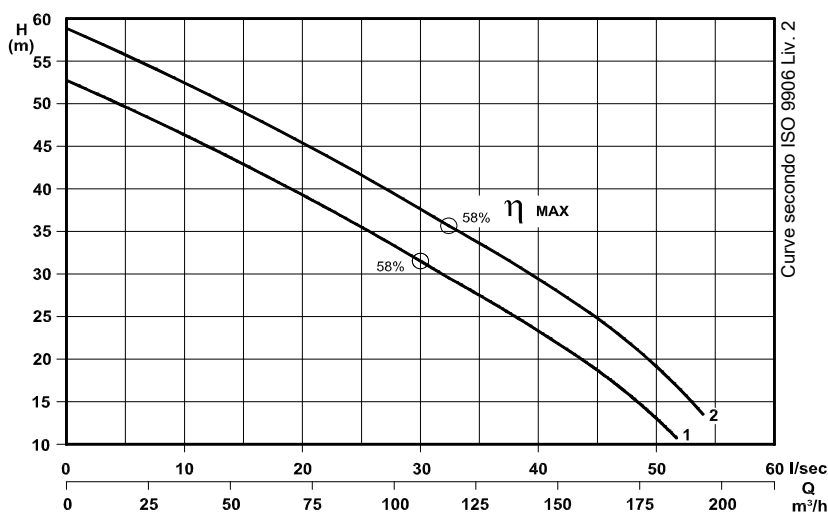
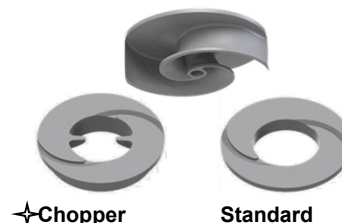
Tel.02 9211.0205 - 02 9233.0399 Fax 02 9211.0630 Sito Internet: www.pomperotomec.it E-mail: sales@pomperotomec.it

Elettropompe con motore flangiato per liquidi carichi in camera asciutta
Dry installed sewage electric pumps with flanged motor
Electropompes pour eaux chargées en fosse sèche



CURVA - Curve - Courbe		POMPA Pump Pompe		DN	GIRI /Min - RpM - Tours/min.	POTENZA MOTORE Motor rating Puissance moteur	PESO Weight Poids
N°						kW	Kg
1	KBM 80/2-200 A6 L4	80	2900			18,5	275
2	KBM 80/2-206 A7 L4					22	305

Girante bicanale aperta e diffusore autopulente
Two channel open impeller and self-cleaning diffuser
Roue à 2 canaux ouvert et anneau autonettoyant



P2 - Potenza resa - Shaft power - Puissance sur arbre

✦ Versione chopper con diffusore a taglienti e girante induriti
 Chopper version with cutting diffuser and impeller hardened
 Version chopper avec anneau tranchant et roue durci

COSTRUZIONE - Materials - Matériaux

Fusioni principali - Principal parts - Parts principal	Ghisa - Cast iron - Fonte - GG 25
Girante - Impeller - Roue	Ghisa - Cast iron - Fonte - GS 500
Albero - Shaft - Arbre	AISI 420
Viteria - Screws - Vis	AISI 304

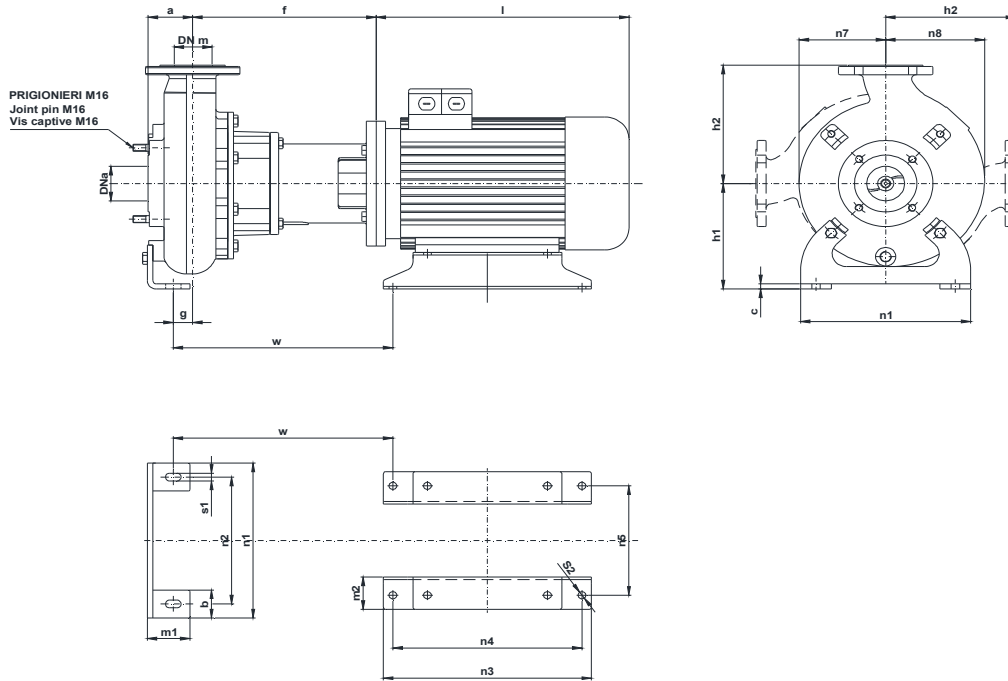
TENUTE MECCANICHE - Mechanical seals - Garniture mécanique

Doppia tenuta meccanica in bagno d'olio - Double mechanical seals in oil bath - Double garniture mécanique en chambre d'huile
 Tenuta lato motore / tenuta lato liquido : carburo di silicio
 Motor side / liquid side mechanical seal : silicon carbide
 Garniture mécanique côté du moteur / côté liquide : carbure de silicium

CARATTERISTICHE TECNICHE - Technical Features - Caractéristiques Techniques

Motore - Motor - Moteur : B5 IP55 Classe isolamento - Insulating class - Isolement classe : F
 Max. temperatura liquido - Max liquid temp. - Max Temperature du liquide: 60°C
 pH Liquido pompato - pH pumped liquid - pH du liquide pompé : 6 - 10

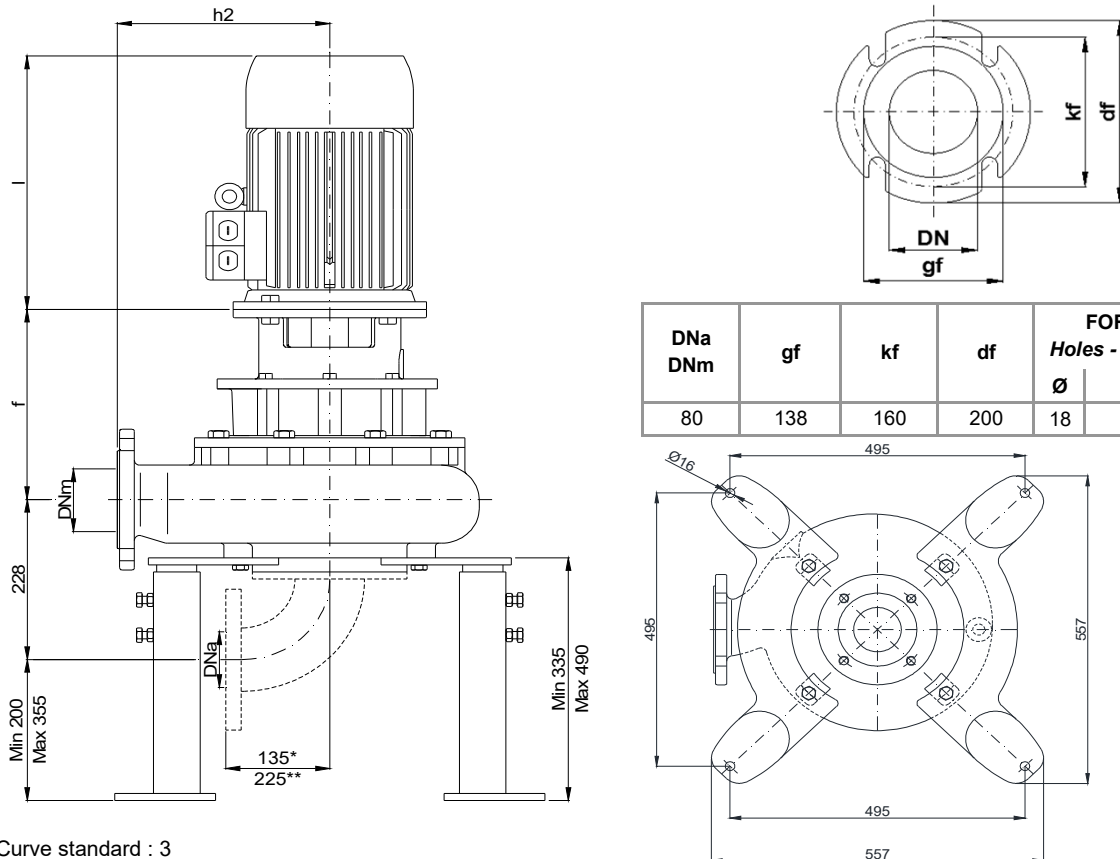
INSTALLAZIONE ORIZZONTALE - Horizontal installation - Installation Horizontale



POMPA Pumps Pompe	DNa DNm	Gr. Motore Motor size Taille du moteur	a	b	c	f	g	h1	h2	l	m1	m2	n1	n2	n3	n4	n5	n7	n8	s1	s2	w
KBM ..200..	80	160 L	95	70	12	388	29	245	275	545	100	100	400	330	440	254	254	185	210	18	16,5	452
KBM..206..		180 M								575						241	279					

Dimensioni - Size - Dimensions in mm.

INSTALLAZIONE VERTICALE - Vertical installation - Installation verticale



DNa DNm	gf	kf	df	FORI Holes - Trou	
				Ø	n°
80	138	160	200	18	4

* Curva dima - Curve standard : 3

** Curva dima - Curve standard: 5

KBM 80/4-280-1-17X.0

Con riserva di variazioni tecniche e costruttive senza preavviso.

With reserve of technical and constructive variations without warning. - Avec réserve de variations techniques et constructives sans préavis.

POMPE ROTOMECH srl - 20063 CERNUSCO SUL NAVIGLIO (MI) - ITALY - Via Ponchielli, 1

Tel.02 9211.0205 - 02 9233.0399 Fax 02 9211.0630 Sito Internet: www.pomperotomec.it E-mail: sales@pomperotomec.it