



POMPE ROTOMECC

BT 3022÷3034-30.6

DN 300 960 rpm

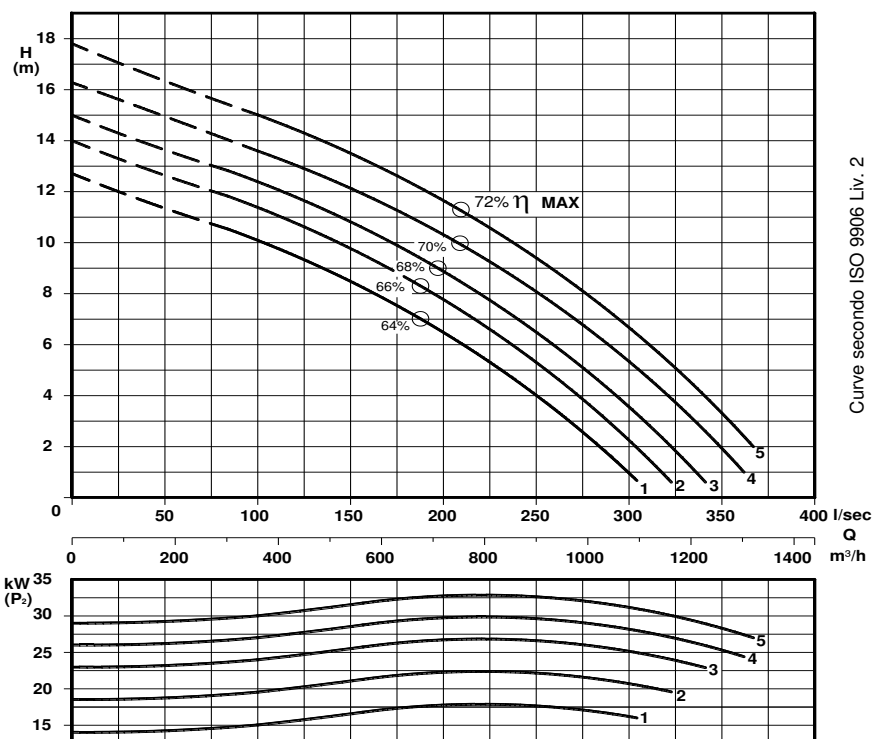
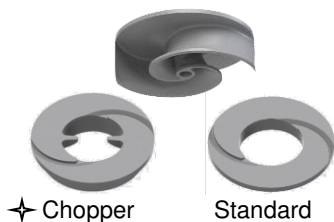
Pompe sommergibili con girante bicanale aperta e diffusore autopulente
Submersible pumps with 2 channel open impeller and self-cleaning diffuser
 Pompes submersibles avec roue à 2 canaux ouvert et anneau autonettoyant



N°	CURVA - Curve - Courbe	POMPA Pump Pompe	GIRI /Min - RPM - Tours/min.	POTENZA RESA NOMINALE Rated power Puissance nominale (P ₂)	ASSORBIMENTO NOMINALE Rated current Intensité nominale 400 V.	FATTORE DI POTENZA Power factor Facteur de puissance	TENSIONE - Voltage	CAVO - Cable	SONDE TERMICHE Thermal control Thermosondes	SENSORE INFILTRAZIONE Moisture sensor Detecteur de infiltration	CAMICIA DI RAFFREDD. cooling jacket chemise de refroidissement	PESO - Weight - Poids	INSTALLAZIONE - Installation	F	M	T	
1	BT 3022/6 - 3320	960	960	22	46	0,88	3 ~ 50 Hz 400/700 V.	H07RNF 10m	●	●	○*	780	○	○	○	○	
2	BT 3022/6 - 3334			30	58												(2) 4G6 +
3	BT 3030/6 - 3347			34	63												(1) 4G1,5
4	BT 3030/6 - 3360																
5	BT 3034/6 - 3373																

● Di serie - Standard ○ A richiesta - On request - A la demande

* Sistema di raffreddamento con circolazione forzata di liquido refrigerante - Cooling system with forced circulation of cooling liquid
 Système de refroidissement à circulation forcée du liquide réfrigérant



Curve secondo ISO 9906 Liv. 2

P₂ - Potenza resa - Shaft power - Puissance sur arbre

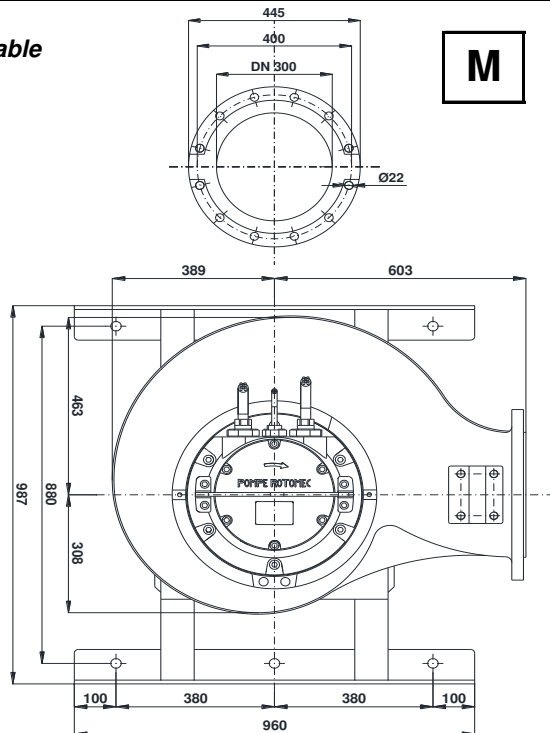
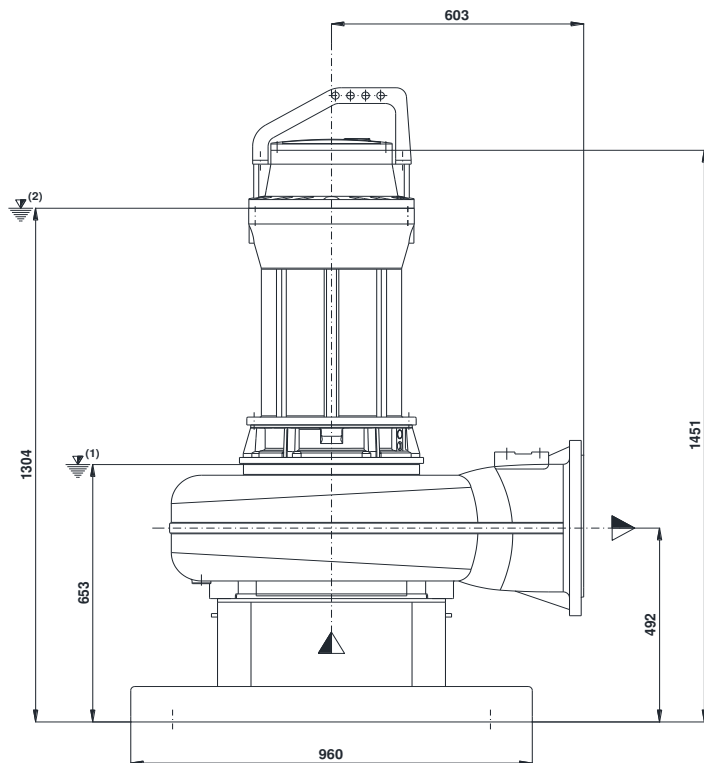
✦ Versione chopper con diffusore a taglienti e girante induriti
Chopper version with cutting diffuser and impeller hardened
 Version chopper avec anneau tranchant et roue durci

COSTRUZIONE - Materials - Matériaux	
Fusioni principali <i>Principal parts</i> <i>Parts principal</i>	Ghisa Cast iron - Fonte GG 25
Girante e diffusore <i>Impeller and diffuser</i> <i>Roue et anneau</i>	Ghisa Cast iron - Fonte GS500
Albero - Shaft - Arbre	AISI 420
Viteria - Screws - Vis	AISI 304
Motore - Motor - Moteur : IP68 - Eff. (IE3)	
Classe isolamento - Insulating class : F	

TENUTE MECCANICHE - Mechanical seals - Garniture mécanique

Doppia tenuta meccanica in bagno d'olio - Double mechanical seals in oil bath - Double garniture mécanique en chambre d'huile
 Superiore - Upper - Supérieur: Carburo di silicio - Silicon carbide
 Inferiore - Lower - Inferieur: Carburo di silicio - Silicon carbide
 Max. temperatura liquido: 40°C - Max liquid temp. 40°C
 Max profondità di installazione - Max installation depth
 Max profondità d'installazione = 20m.

INSTALLAZIONE MOBILE - Mobile installation - Installation portable

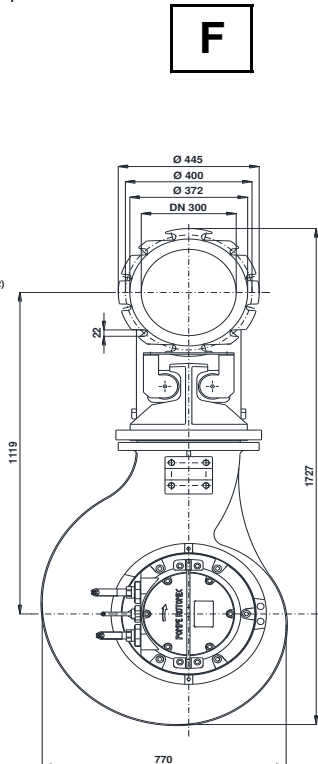
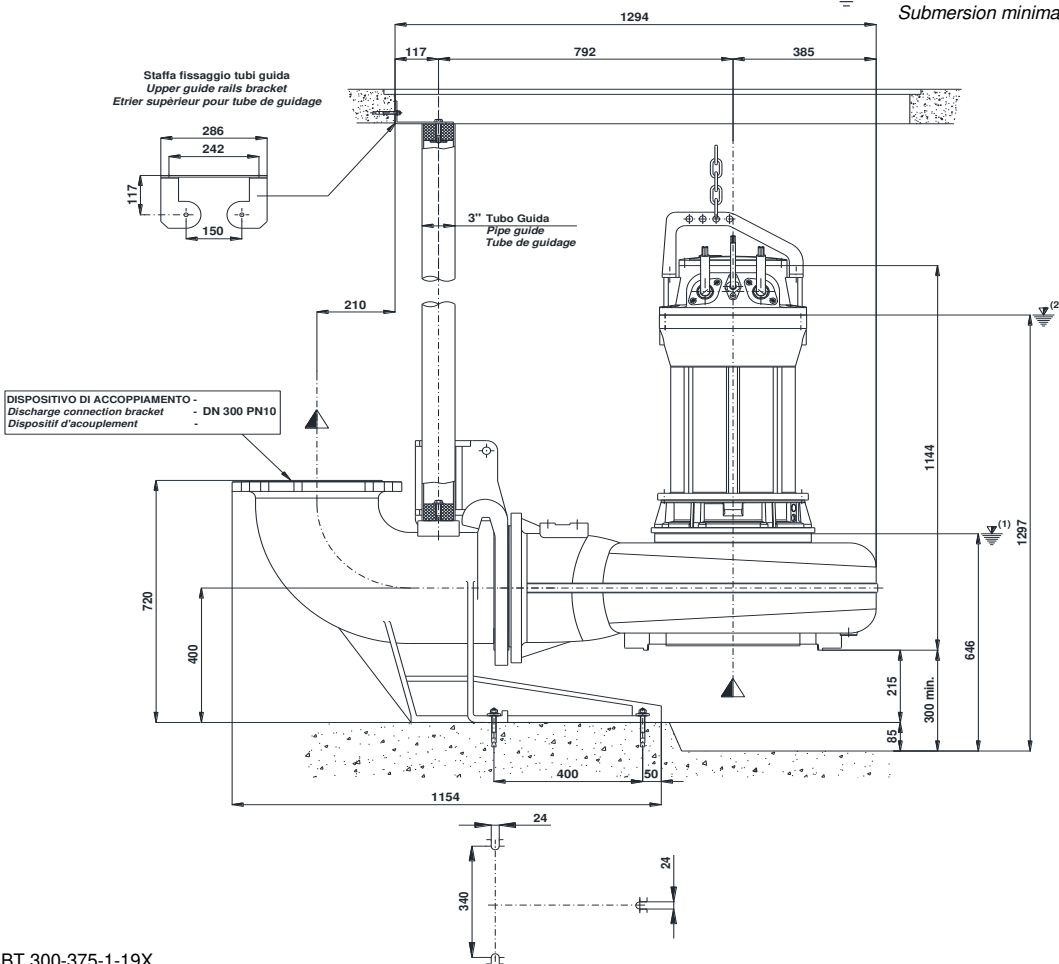


M

(1) Livello minimo di arresto per funzionamento automatico.
 Lowest shut-of level for automatic control.
 Point d'arrêt plus bas pour service automatiques.

INSTALLAZIONE FISSA - Fixed installation - Installation fixe

(2) Sommergenza minima per funzionamento continuo.
 Minimum covering level for continuous service.
 Submersion minimal pour service continu.



F

BT 300-375-1-19X

Con riserva di variazioni tecniche e costruttive senza preavviso.

With reserve of technical and constructive variations without warning. Avec réserve de variations techniques et constructives sans préavis

POMPE ROTOMECC s.r.l. - 20063 CERNUSCO SUL NAVIGLIO (MI) - ITALY - Via Ponchielli, 1

Tel. +39.02.9211.0205 - +39.02.9233.0399 Fax 02.9211.0630 Sito Internet: www.pomperotomec.it E-mail: sales@pomperotomec.it